



SWITCH PROGRAMME 2017



Are you crazy enough?

The Switch Programme has been designed to cater for Activators who are in the concept phase of their (social) enterprises and who are ready to start developing their concept into one that can plug into further incubation/development spaces. Switch guides and supports the development of concepts to reach **three main objectives:**



Innovation



Relevance



Self-sustainability

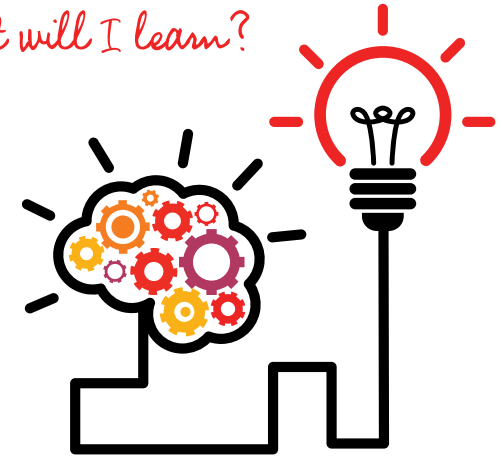
Who can apply for switch?

Any 2012 – 2016 Activator who has completed three A! Modules.

How long is the Switch Programme?

It is a 12 month programme.

What will I learn?



- Research Skill Basics
- Business Model Development
- Financial Education
- Social Impact Basics
- Monitoring and Evaluation Basics
- Income generating options
- Legal Enterprise Structure 101
- Community Mapping
- Social Media Management Basics
- Proposal Writing
- Event Planning and Organisation
- Pitching
- Networking
- And much more!



'The switch keeps my ambitions lit through it's pool of resources and connections.'

Lionele Catla, 2014 Switcher

How does Switch work?

The Switch year consists of two workshop sessions in various locations across the country, as well as continuous home tasks which keep participants engaged with their projects and ensure progress. Each task and workshop needs to be completed to receive the next one.

Remote support and task feedback is received from the Switch facilitator via email, social media and phone calls so that no Switcher ever feels alone or lost.

What is required for Switch?

Switch is looking for Activators who:

- Are ready to DO and move a concept into practice
- Understand and are ready to meet deadlines and work hard
- Have TIME to develop their concepts and work on home tasks (a few hours every month)
- Are accountable
- Are ready to learn and innovate
- Are ready to MAKE money and not WAIT for money
- Have some form of internet access (to receive and submit tasks)
- Ready to take risks
- Are medium – a lot crazy!



What is new in 2017?



2017 will see the initiation of 'Big Brothers and Big Sisters'; and internal mentoring/support system for 2017 Switchers.



Those having completed Switch in 2014, 2015 and 2016 will have an opportunity to become Switch facilitators and trainers.



Continuous opportunity and resource access.

A new partnership with Startup Safari will see one hard working Switcher (2014–2016) attend a 10 day entrepreneur programme in INDIA in July 2017!!

www.startupsafari.org

Is Switch Accredited?

No, it's not at this point. Participants will receive a letter of completion once all tasks and workshops have been done.

Is there a fee?

Successful applicants will need to pay R100 registration fee for the 12 month programme.

How do I apply?

Go to online application by clicking the link in the email message above.

GOOD LUCK!!!

ACTIVATE!
change drivers

ACTIVATE! Head Office 177 Main Road Muizenberg 7945 Cape Town
T: 087 820 4873 F: 0866 915 657 E: info@activateleadership.co.za

[@ActivateZA](https://twitter.com/ActivateZA) [f ACTIVATE! Change Drivers](https://www.facebook.com/ACTIVATE!ChangeDrivers)

www.activateleadership.co.za

For queries, please email carrie@activateleadership.co.za
or find Activate Change Drivers Switch Programme on Facebook



'Once you get switched, you will never go back. The best decision I have ever made.'

Gabaiphiwe Makgaka, 2015 Switcher